

Greenland T

by Tahe Kayaks

This kayak is a direct descendent of the traditional kayaks of Greenland, ancient boats that reached Central Europe as early as the 17th century. The Greenland T was introduced into the Tahe Marine specialty range in the 2010 season. The target: to add a higher volume version into the range compared to the original Tahe Marine Greenland, but still keep the good characteristics of the design in mind. All of this to offer a possibility for each and every paddler to enjoy the nice design of the Tahe Marine Greenland range. This model was fine-tuned using a lot of the feedback from the market. It has three hatches, including a day-hatch to offer the possibility to reach the necessary gear on water, longer safety lines in order to offer even better security, toggles for more convenient handling of the kayak and a bigger cockpit in order to fulfill the wishes of many paddlers who found the original Tahe Marine Greenland maybe just about too tight.

—Tahe Marine Team

REVIEWERS

CA: 5' 5", 150-pound female. Day paddle, light breeze, light chop with occasional boat wakes. 15 pounds cargo.
 TW: 6' 1", 180-pound male. Day paddles, winds to 10-15 knots, wind waves to 2 feet. No cargo.
 TE: male: 6' 1", 200-pound male. Day trips, winds 22 knots, waves 3 feet cresting to 4 feet in shoals. No cargo.

Length overall	17' 10 1/2"
Beam	20 3/4"
Volume	9.8 cu. ft.
Cockpit size	15 3/4" x 30 7/8"
Cockpit coaming height:	
Forward	10 1/4"
Aft	6"
Height of seat	7/8"
Weight	51 lbs.

THE REVIEW

First Glance

Tahe's composite Greenland T "is a remarkable blend of Greenland styling and conventional convenience and safety features. This boat has a sleek low deck and a high 'lust' factor. Molded into the back deck is a channel that provides stiffening and drainage and two bars for lockup security" (CA). "Very pleasing, classic lines complemented by the dark finish make one sexy looking craft. The hatches are recessed, resulting in a minor reduction of space but providing ease of movement on the deck and authentic appearance. Finish throughout the kayak was exceptional. All edges were nicely de-burred and the interior has a layer of white resin, giving the kayak a very bright appearance inside" (TW).

The Greenland T "has a heft to it but it is well balanced for single carry and the smooth cockpit coaming rides nicely on the shoulder" (CA). "Toggles on either end were held down with shock cord so they don't bang on the hull when paddling, a nice touch. It was easy to carry the Greenland T with two people; the slender ends made grabbing the hull the best choice" (TW). "Recessed deck fittings route a sensible and

thorough deck rigging" (TW). "The beads on the deck lines were great for making it easy to stow a Greenland paddle on either deck" (TE).

Fit

"The keyhole cockpit allows for easy entry and exit for a person my size. Once situated in the cockpit, the knee braces provided a secure feel. The foredeck does not interfere with high angle strokes" (CA). "The cockpit opening was plenty large enough for me to slide into. The overall height of the deck was low and the cockpit was narrow but perfectly comfortable. I was wearing size-11 flexible footwear and my feet were bent over the foot braces" (TW). "The low profile made for a snug fit. With size-13 booties I had to push the footrests forward and keep my toes pointed. I was sort of wedged in" (TE).



The backrest and seat “provided near-perfect comfort. The back band was low, providing good support and allowing full range of motion for paddling” (TW). TE found the seating “very comfortable. It fosters an upright posture. Layback is not limited by back band or aft deck.” The thigh braces are “integrated into the cockpit coaming in an ideal location. I had full contact without feeling cramped and locked in without a significant effort when I desired better boat control” (TW). “The foot braces were very secure, easily adjustable and very comfortable with their large surface area” (CA).

The Greenland T is equipped with a skeg. The control slider is “easy to see and operate. The blade deploys smoothly and has a considerable amount of area when full deployed” (TE).

Stability and Maneuverability

CA found the Greenland T “unexpectedly stable, enough so for photography. The boat was quite comfortable when edged to the point of having the spray skirt in the water.” For TW the initial stability “provided a comfortable platform. Edging onto the secondary required more attention and the ability to brace if pushed too far.” For TE the initial stability was “on the light side of moderate. In flat water I felt at ease but made regular subtle adjustments with my hips. The secondary stability is also light to moderate.”

“Tracking was quite good on calm water and in chop. The Greenland T had very little tendency to wallow or wander off course. It is a fun boat to turn. Just dial in the amount of lean and the hull provides graceful turns” (TW). “When edged the Greenland T carved moderately tight turns. It maintained the turn between sweeps but the stern did not skid around” (TE).

Speed

CA found the Greenland T “quick enough to accelerate to catch boat wakes. I could cruise at 4 knots with relative ease and sprint to 5 knots.” “This kayak felt fun and fast. Acceleration was quick and cruising seemed effortless” (TW). “At a relaxed pace I could hold 4.25 knots, at an exercise pace 5 knots, and at a short sprint hit 5.5 knots” (TE).

BEST FEATURES

- Rolling
- Handling in wind and waves

TO IMPROVE

- Footroom

“The Greenland T has a low profile and I fully expected the deck to be awash in light chop and it was, but I did not get unexpectedly splashed by waves breaking over the deck” (TW). “The low profile made it a pleasure to paddle in wind. Most of the time I paddled with the skeg retracted and had no trouble with weathercocking. I could paddle any direction without correcting strokes. I put the skeg all the way down for a downwind course and the skeg made the bow swing downwind and stay there. A slight degree of deployment is all that’s needed for setting a course downwind” (TE).

“Paddling in a following sea was just plain fun. The Greenland T was quick to accelerate and catch small wind waves and ride them until they faded away” (TW). TE “caught some great rides. The Greenland T was pretty easy to control. Downwind surfing was best without the skeg or with it only slightly down” (TE).

Rolling and Rescue

The “the large cockpit opening make exiting and reentering straightforward” (CA). “Reentry was easy. Lunging aboard didn’t require a lot of effort. For a seat-first scramble reentry I had to do almost a full layback to get my feet in” (TE). “Solid foot braces, comfortable thigh braces, low coaming and a narrow hull make this kayak a blast to roll” (TW). “The full layback makes Greenland rolling techniques easy. C-to-C rolls are a breeze too. Reentry and roll takes a bit of time to get scooted into place, but once locked in, the boat’s a snap to get upright” (TE).

Cruising

“This is a pretty low-volume boat. You could camp three or four days. The white



The lever in the cockpit is used to adjust the foot braces. The skeg control is on the port side, far enough forward to be easily seen.

gelcoat inside makes it very easy to slip things in and to see everything in the hatches” (CA). “The shallow compartments won’t take large dry bags. A compact sleeping bag might be in order” (TE). “The solidly installed fiberglass bulkheads and KajakSport hatch covers are absolutely watertight after considerable rolling and rescue practice” (CA). TE reported “only ¼ cup of water in the day hatch. The recesses for the hatches are all fairly tight against the hatches, especially the aft hatch. If I pushed a fist down just inside the edge of the hatch, its rim would curl up and then removing the cover was easy.”

The Bottom Line

“Tahe met the objective of offering the esthetics and handling of a Greenland-style kayak with the advantages of modern technology. The workmanship makes this boat both pleasing to the eye and completely seaworthy. It’s fun!” (CA). “The Greenland T was a blast. It is the purist’s Greenland-style kayak with all the trimmings of a modern craft. It is ideally suited for the enthusiast who loves a quick, wet paddle after work, or a blazing day trip in rowdy conditions” (TW). “The T was a great performer in rough, windy conditions. It goes where you want it to and doesn’t catch a lot of wind. A beginner will have to work skills up to the Greenland T. The advanced paddler will find it rewarding. It’s an excellent choice for Greenland-style kayaking” (TE).

MANUFACTURER’S RESPONSE

Once more we are very grateful for the review of the testers at *Sea Kayaker* magazine. The test confirms that we have achieved the target to offer Greenland-style kayaks to a wider customer group. We have noted the issue concerning legroom, but we must

keep in mind the original design and esthetic features of the Greenland-style kayaks.

All in all we promise that we will continue to listen to paddlers so we can develop the best value-for-money kayaks. Thank you!

—Tahe Marine Team

**GREENLAND T
MANUFACTURING DATA**

Designed: 2010

Standard construction: Fiberglass hand lay-up in polyester resin.

Optional construction: Vacuum-infused clear carbon hull with epoxy resin and fiberglass deck or a carbon/aramide hand lay-up construction in polyester resin.

Standard features: Kajaksport PRO skeg system, SmartTrack footbraces, Kajaksport hatches

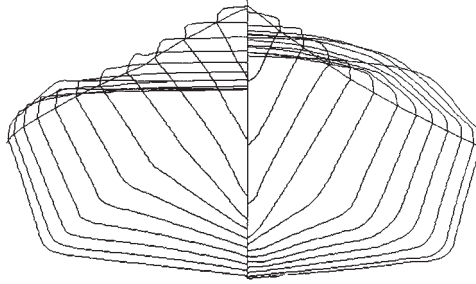
Options: compass, reinforced keel strip, extra thigh pads

Weight: 51–55 lbs. (23–25 kg), carbon/aramide 48–53 lbs. (22–24 kg), semi-carbon 37–42 lbs. (17–19 kg).

Price: Fiberglass version \$2,425 USD; carbon/aramide \$2,899 USD

Availability: See dealer information on website

Manufacturer: Tahe Kayaks Ltd., Estonia.
E-mail: Janek@tahemarine.com
www.tahemarine.com



SPEED VS. RESISTANCE

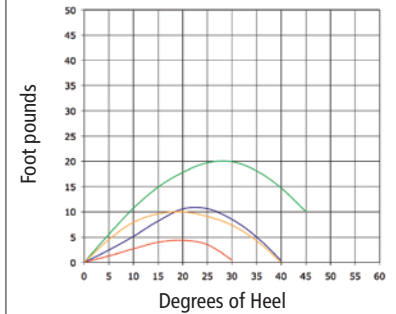
Resistance in pounds.

Speed	Winters/KAPER	Broze/Taylor
2 knots	0.91	0.89
3 knots	1.91	1.91
4 knots	3.62	3.58
4.5 knots	5.29	5.48
5 knots	8.41	8.41
6 knots	14.60	14.60

HYDROSTATICS

Waterline length	14' 10.6"
Waterline beam	20.4"
Draft	5.5"
Prismatic coefficient	0.49
Wetted surface in sq. ft.	21.20
Center of buoyancy	52%
(Hydrostatics calculated with a 250-pound load.)	

Righting/Heeling Moments (Fixed-weight)



Stability Curves*

- 150 lb. paddler, no cargo
- 200 lb. paddler, no cargo
- 150 lb. paddler, 100 lb. cargo
- 200 lb. paddler, 100 lb. cargo

*Formula revised December 2009. (not comparable with stability graphs generated prior to December 2009.)

TECH TALK

Readers interested in the full set of hydrostatics can find them posted on our website at www.seakayakermag.com along with additional data. An explanation of the terms and procedures used in the kayak test program is also available on the site.

Sea Kayaker Magazine

Originally published in *Sea Kayaker* magazine's October 2010 issue.

Copied with permission of the editor.

www.seakayakermag.com